

**SEKI**
CONTROLS

Preventing hazards due to overheating worldwide.

SEKI is always by your side.

SINCE 1980

ISO 9001 / 14001



Thermostats

HB-2 & HB-21

Features

- Snap Action
- Manual and Automatic Resettable
- Safety Design according to IEC Standard
- Horizontal and Vertical Terminals Available
- Customized Wire Connection and Bracket Type Available
- Available with Both Normally Closed and Open Type Contacts
- Single Operation Device(SOD): Open on temperature rise, no closure unless the temperature 0°C or below -35°C

Applications

- Automatic Coffee Makers, Water Heaters, Sandwich Toasters, Dish Washers, Boilers, Dryers, Electric Heaters, Washing Machines, Refrigerators, Microwave Ovens, Water Purifiers, Bidet, etc.

Temperature Setting Range (at no load)

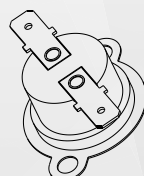
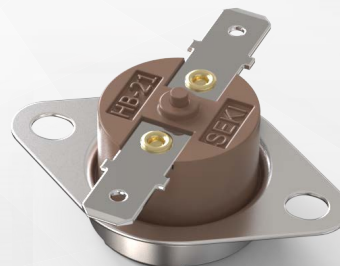
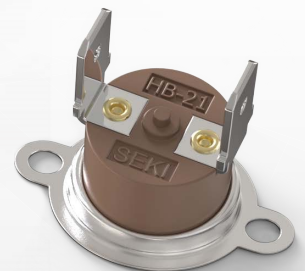
- -20°C ~ 180°C

Tolerance

- Indicated temperature $\pm 3^{\circ}\text{C}$, $\pm 5^{\circ}\text{C}$

Life Cycle(Resistive Load)

- 15A/125V AC 100,000 cycles
- 7.5A/250V AC 100,000 cycles
- 15A/250V AC 6,000 cycles(Manual Reset Type)

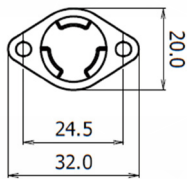


Safety Approvals

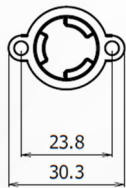
Agency	Standard	Category	Electrical Ratings	Max Temp	File No.
cULus	UL 60730-1 UL 60730-2-9	Protective Control (Thermal Cut-Out)	AC 125V/15A, 250V/7.5A 100,000 cycles	150°C	E162183 (HB-2)
	CAN/CSA-E60730-1 CAN/CSA-E60730-2-9		AC 250V/15A 6,000 cycles		E162183 (HB-21)
TUV SUD	EN 60730-1 EN 60730-2-9	Temperature Controller	AC 125V/15A, 250V/7.5A 100,000 cycles	150°C	B 17 05 99579 006 (HB-2)
			AC 250V/15A 6,000 cycles		B 094543 0007 (HB-21)
CQC	GB/T14536.1-2008 GB/T14536.10-2008	Thermostat	AC 125V/15A, 250V/7.5A 10,000 cycles	150°C	CQC17002173860 (HB-2)
			AC 250V/15A 6,000 cycles		CQC20002279123 (HB-21)
KC	KC60730-1 K60730-2-9	Thermostat	AC 250V/7.5A 100,000 cycles	150°C	ZH02005-15001 (HB-2)
	K60730-2-9		AC 250V/15A 6,000 cycles	180°C	ZH02005-12001 (HB-21)

Standard Options

mm



Flange Cap

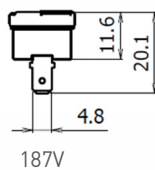


A Bracket

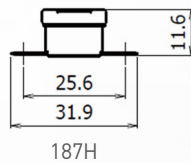


3 Embo Cap

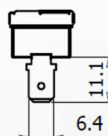
Caps & Bracket



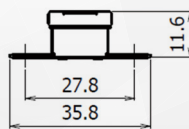
187V



187H



250V



250H

Terminals

Applications



SEKI CONTROLS CO.,LTD.

134, MTV 1-ro, Danwon-gu, Ansan-si, Gyeonggi-do, KOREA

+82-31-493-2900

Help@sekicon.com

+82-31-493-2980

www.sekicon.com

WARNING You may happen to encounter counterfeits of SEKI products in the market, all of which cause a serious damage by their serious defectives in quality. Therefore it is strongly recommended that you purchase authentic SEKI products from our AUTHORIZED distributors.